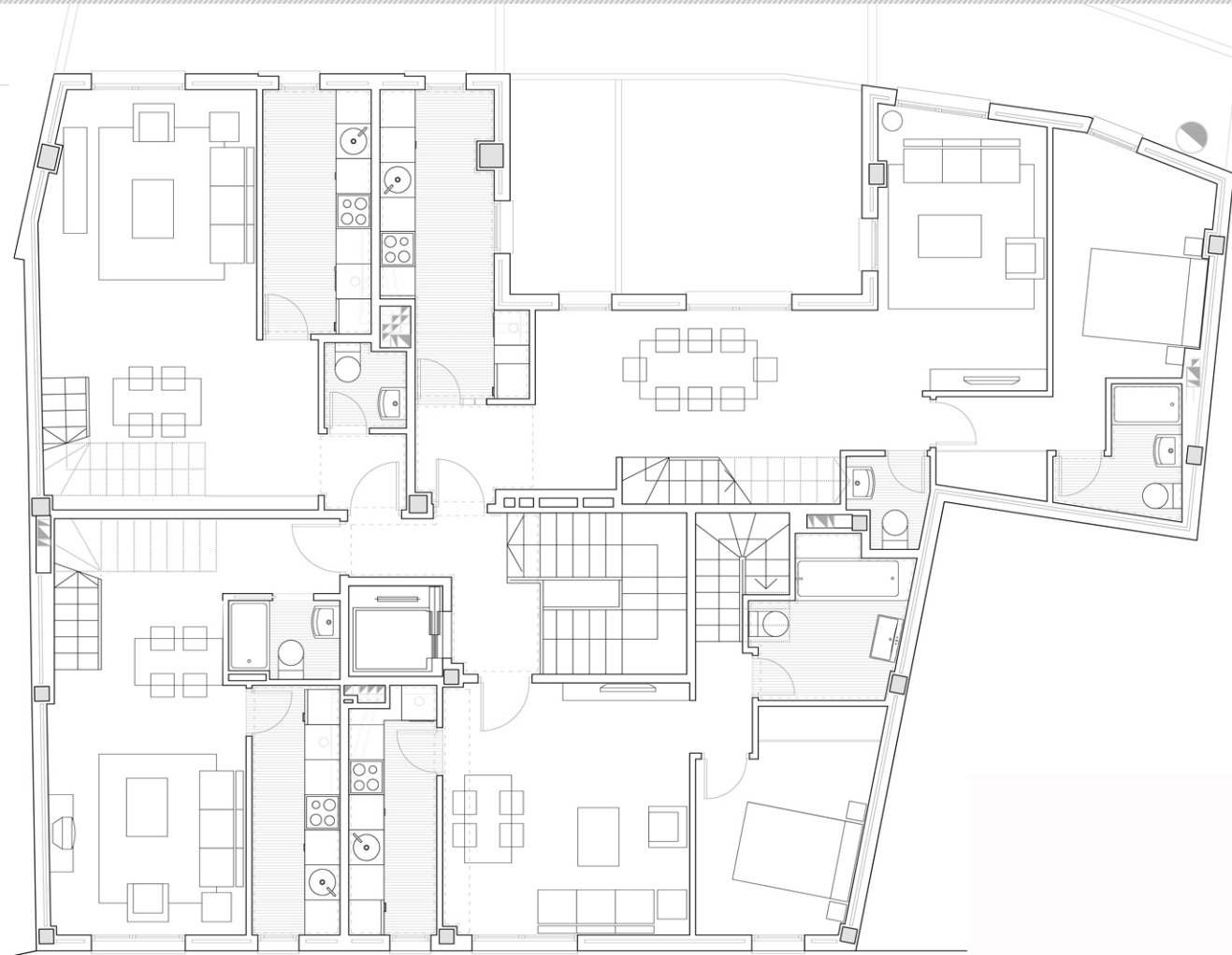
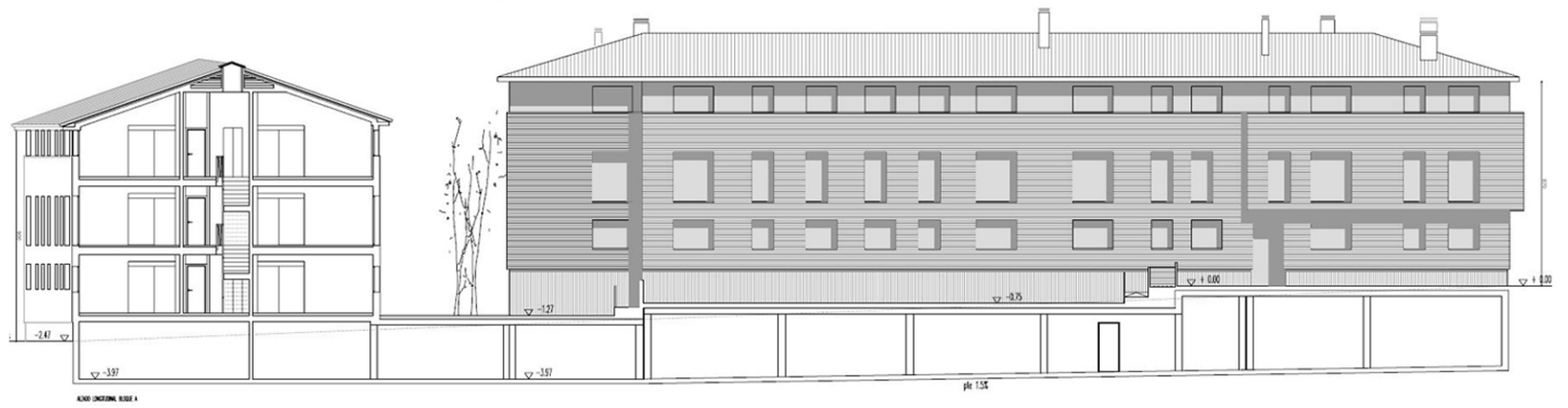
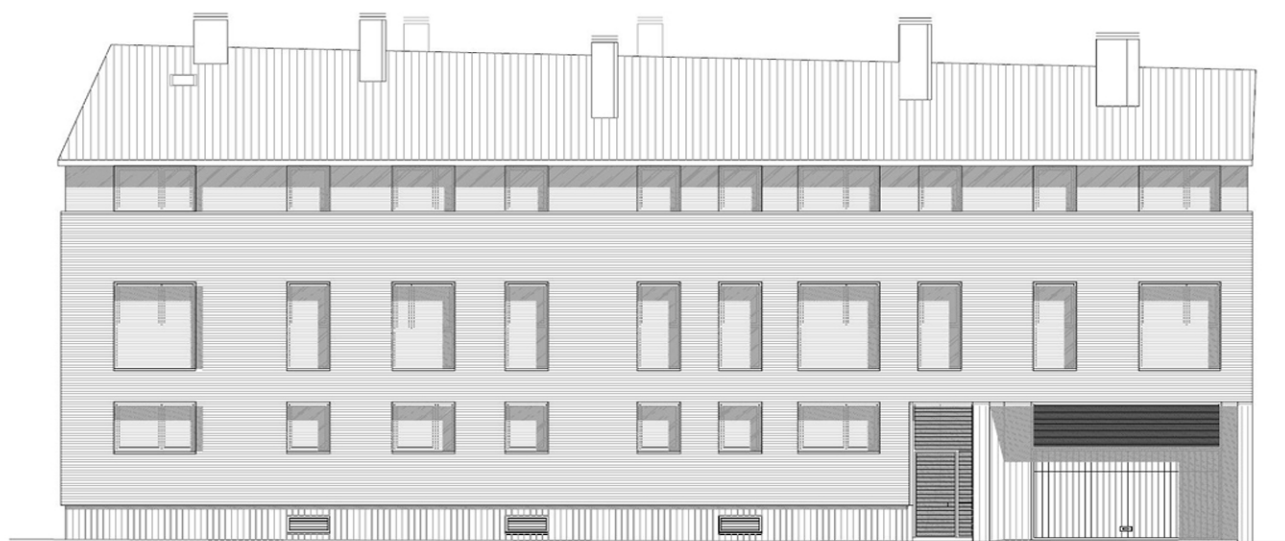


PORTFOLIO

rm arquitectos

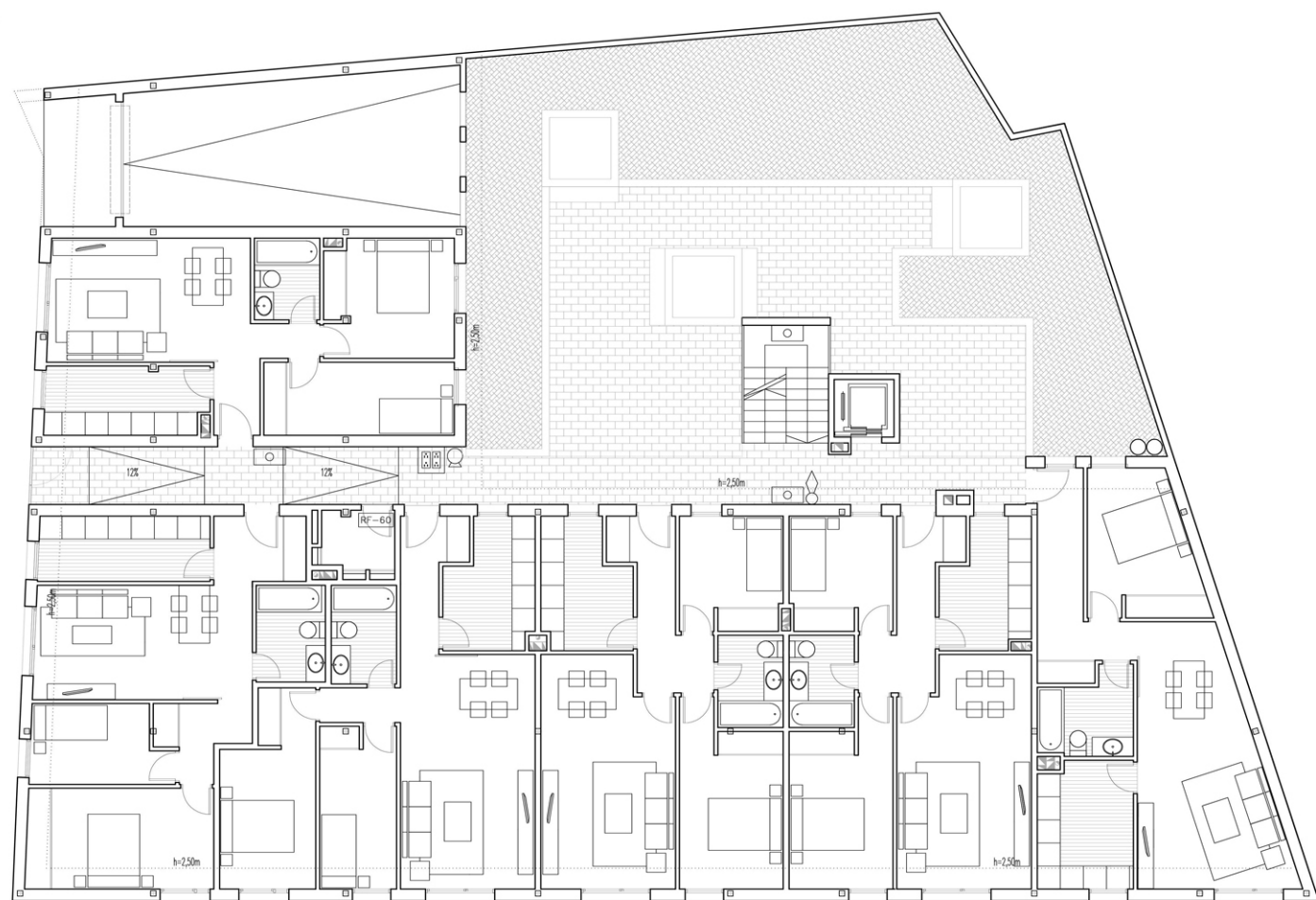
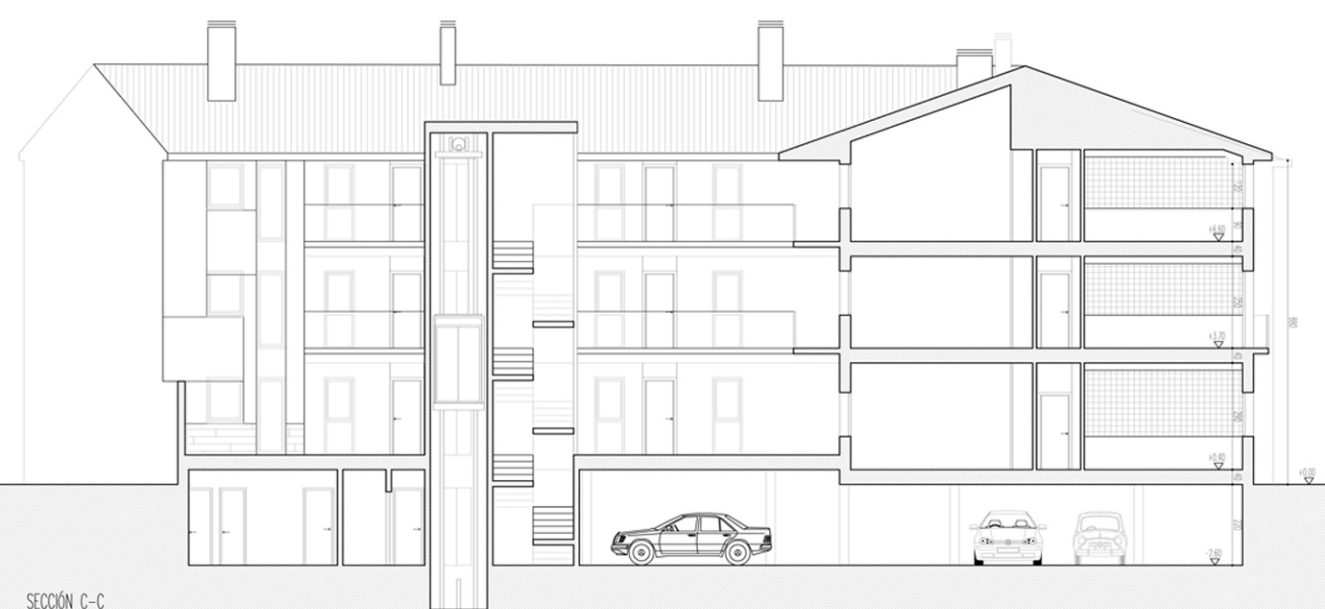


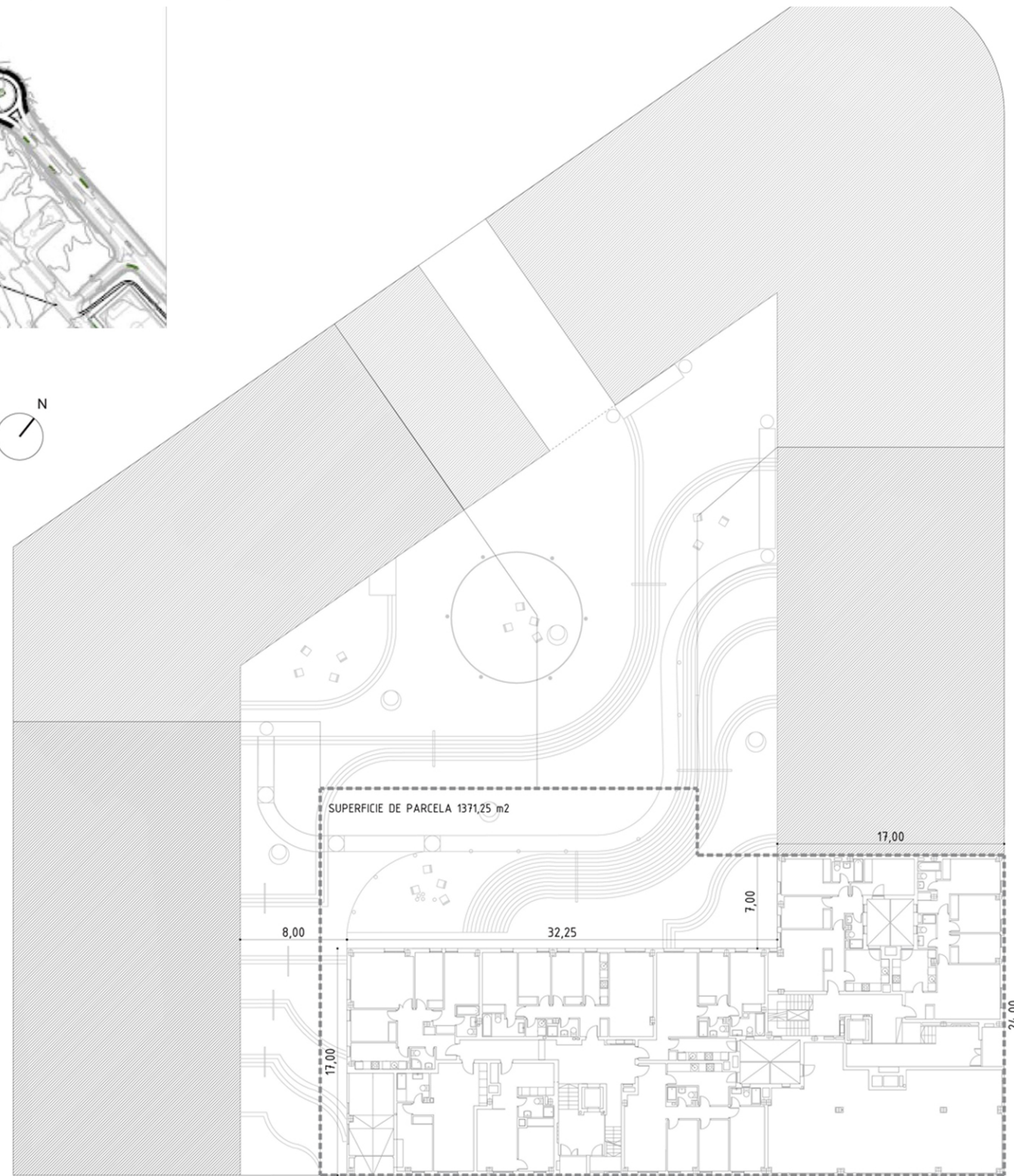


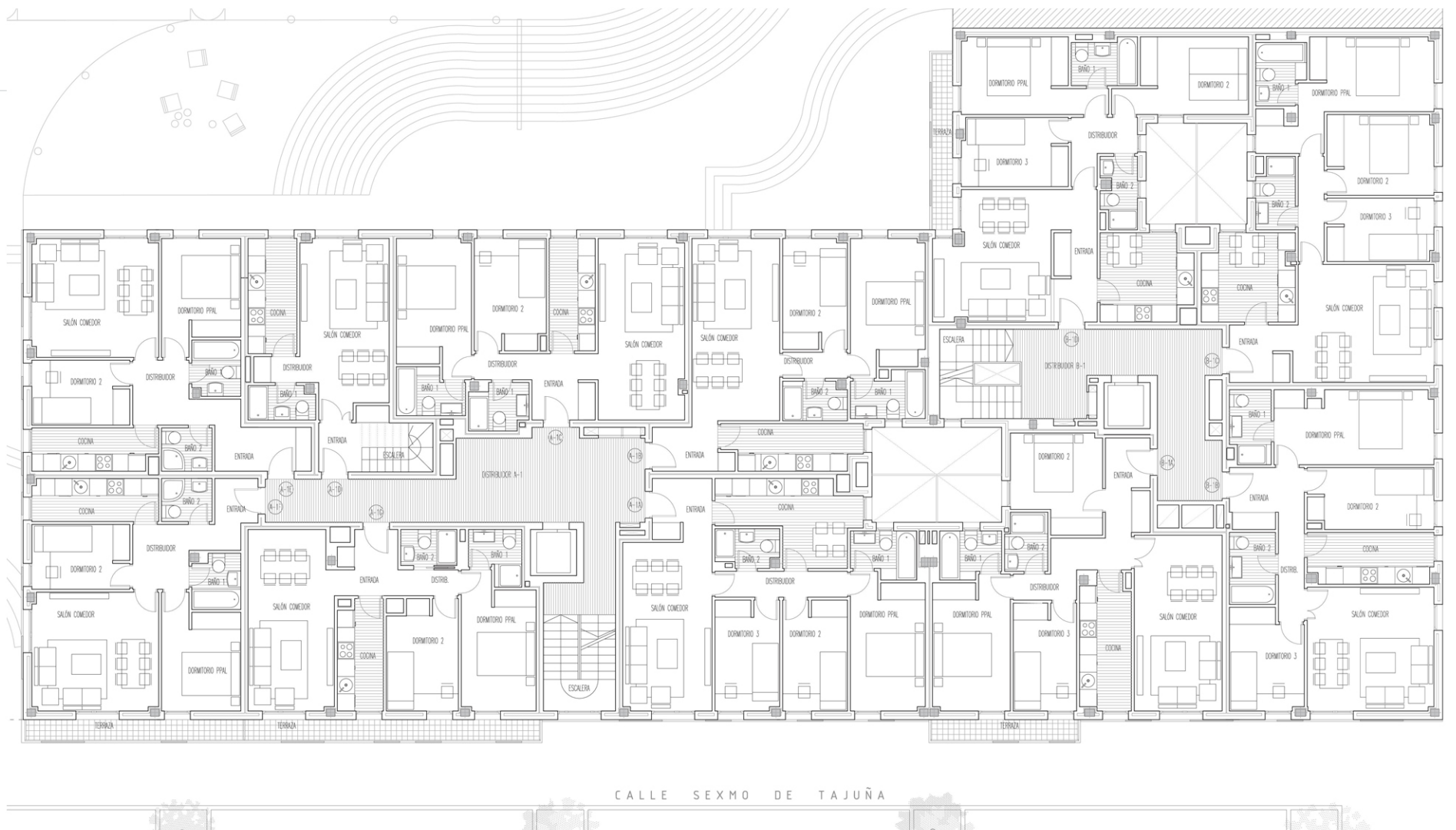


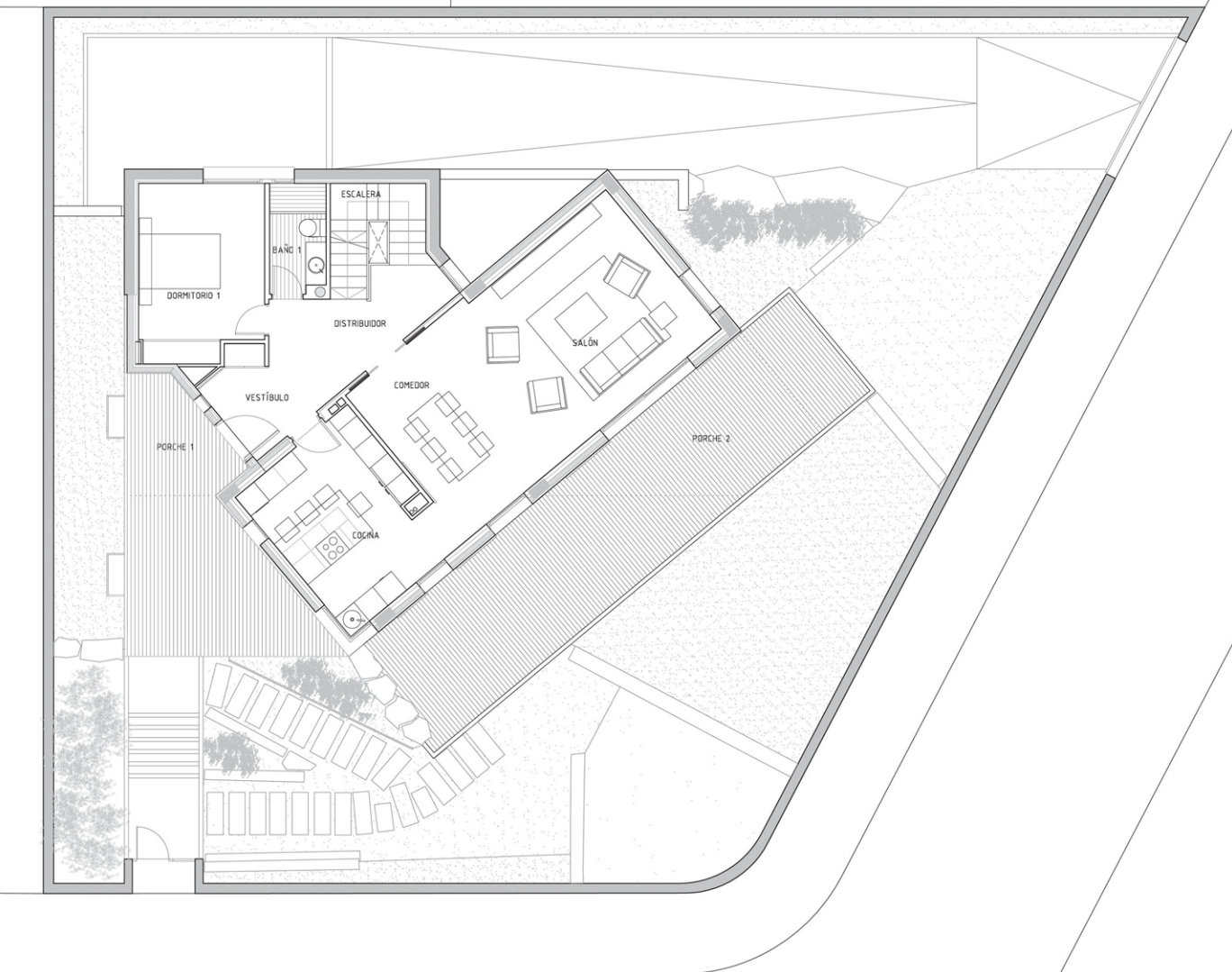
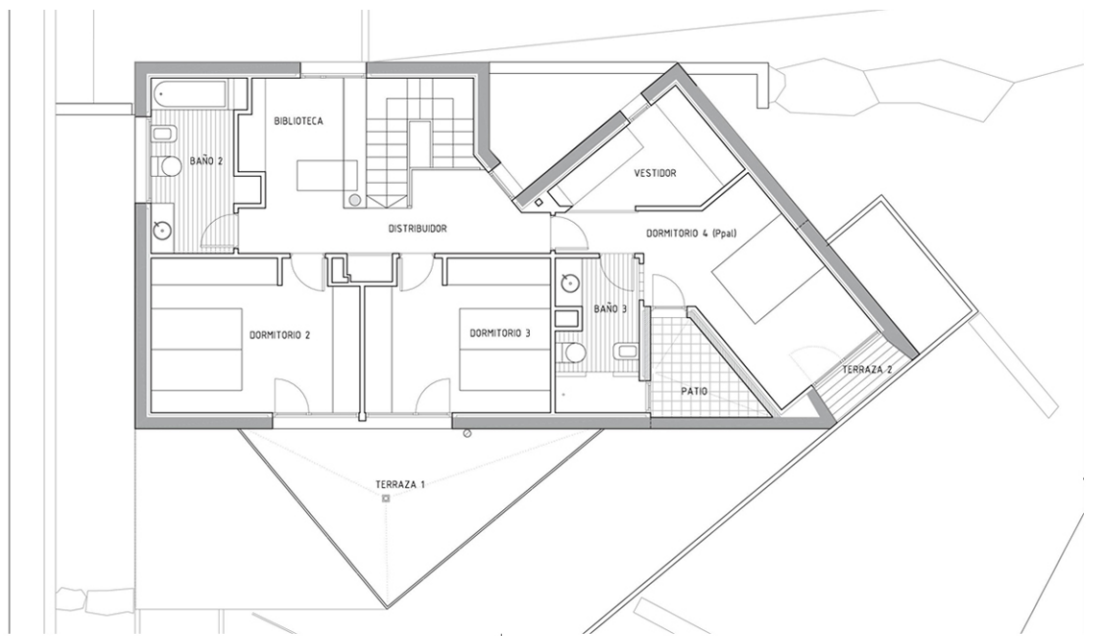
ALZADO BLOQUE B, C/AS PARRAS



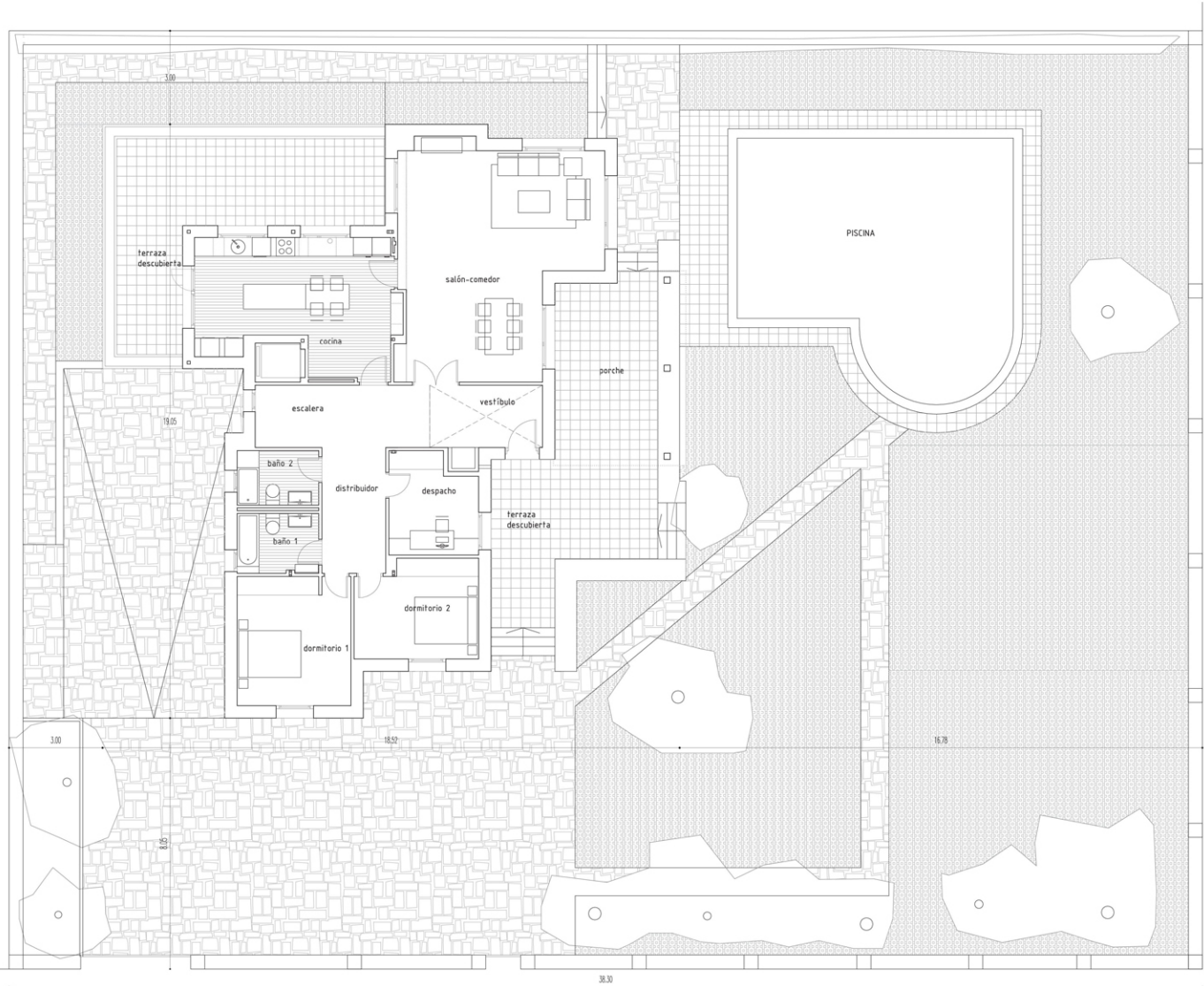
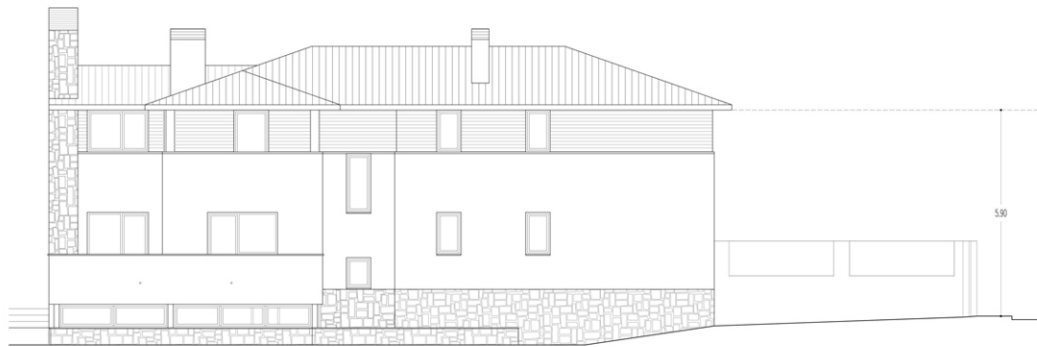
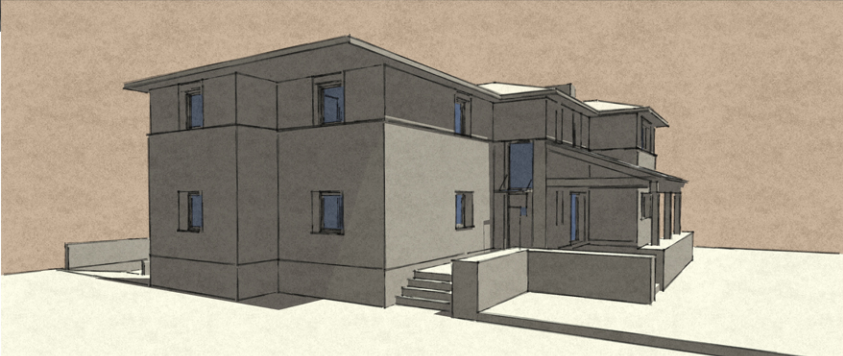


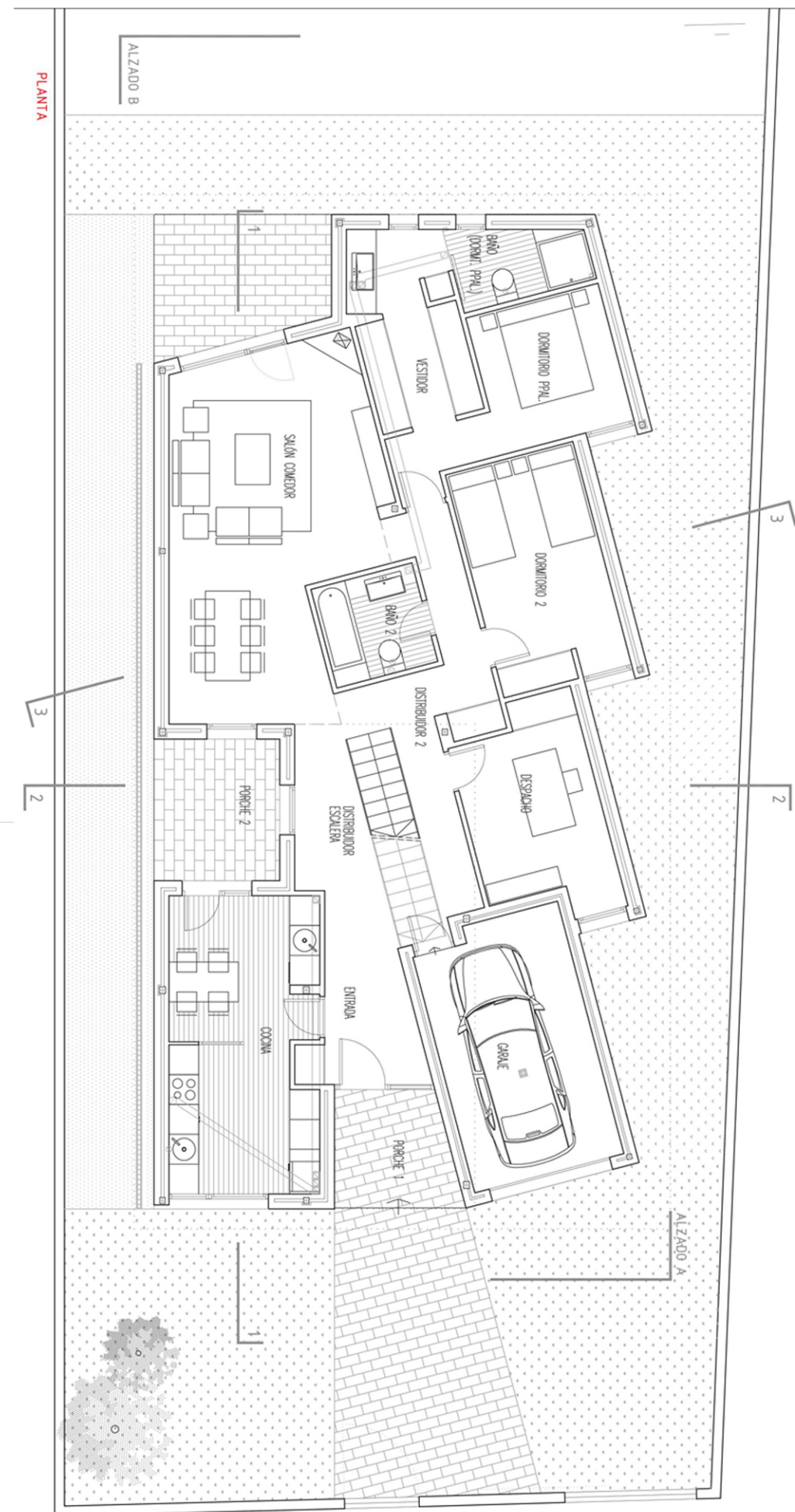


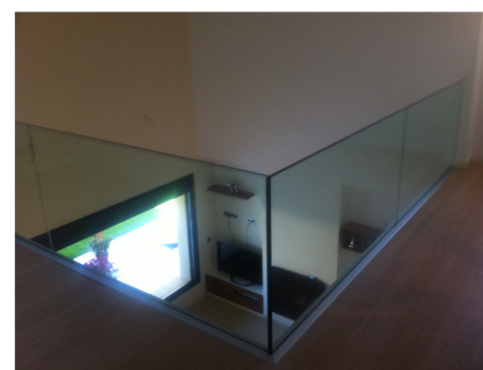


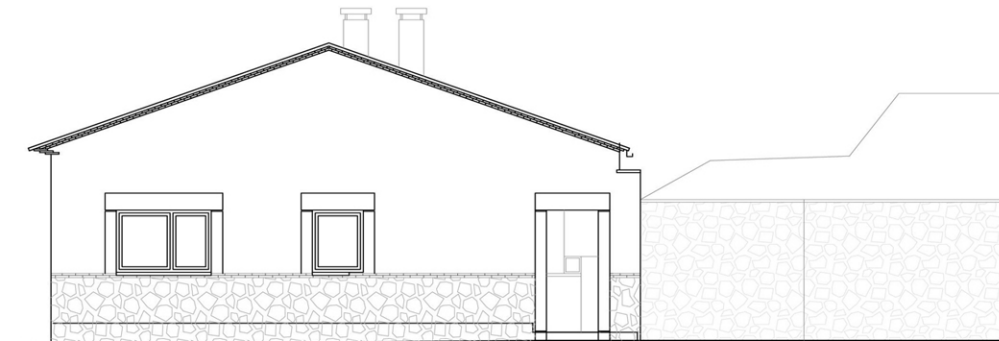




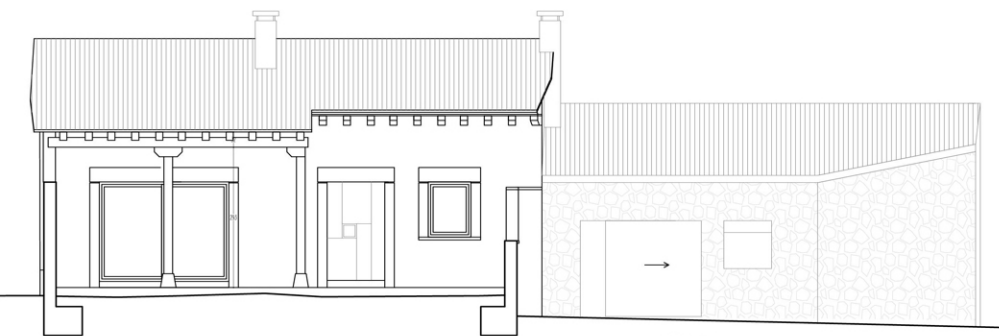






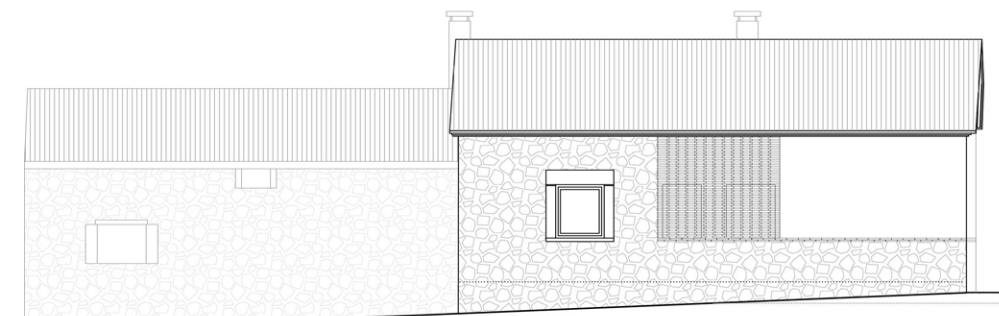


ALZADO CALLE IGLESIA



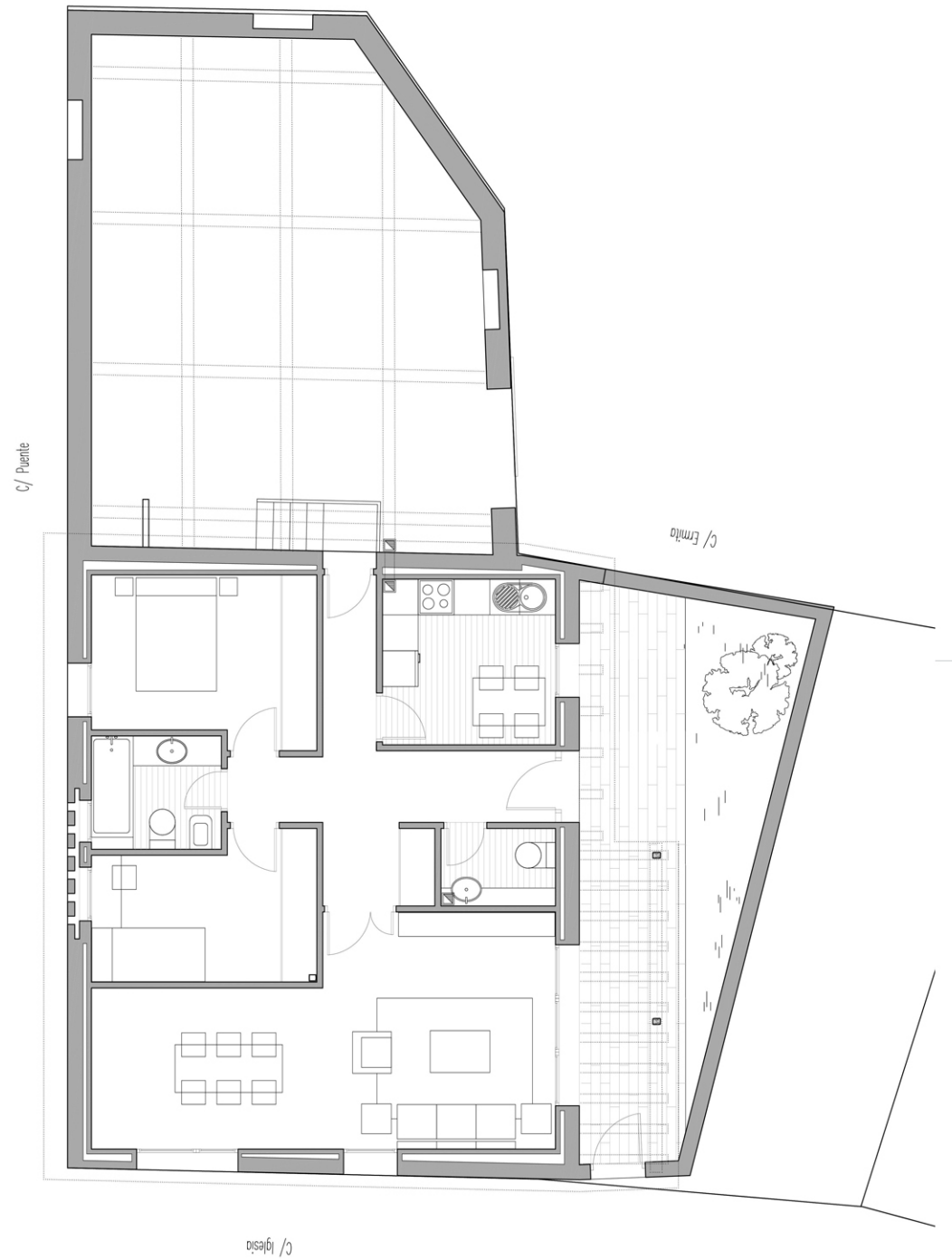
ALZADO-SECCIÓN SUR POR JARDIN

GARAJE EXISTENTE



GARAJE EXISTENTE

ALZADO CALLE PUENTE



C/ Puente

C/ Ermita

C/ Iglesia